

# MK7C, MK10A-WC & MK10A-CT

## SMART METER

Rbee Solar



Mk10A



Mk7C

- PV CENTRAL MONITORING
- SELF CONSUMPTION MONITORING (IF SUBMETER)
- MONTHLY BALANCE FOR INSTALLATION PERFORMANCES

### PLUG & PLAY INSTALLATION



- 3 screws installation without extra electric protection
- Direct connection or current transformer measurement
- Single-phase or three-phase
- Cellular connection included (2 years subscription)

### PROVEN RELIABILITY



- 5 years warranty
- Internal data storage and battery
- Alerts and failure detection
- MID certified meter

### USER & INSTALLER INTERFACE



- Web and mobile interface
- Day-to-day production, consumption and self-consumption monitoring
- Local interface (Screen + buttons) with Index reading and cellular signal strength level
- Performance analyze from solar irradiance by satellite

### EXTRA OFFER



Demo website  
[www.mylight-systems.com](http://www.mylight-systems.com)



Submeter

Direct connection single-phase : MC1D01RM  
Direct connection three-phase : TDA80-M  
CT three-phase : SDM72CT-M



Cellular antenna

# TECHNICAL DATA

## Electrical characteristics

Meter model	Mk7C	Mk10A-WC	Mk10A-CT
Power Supply	Single-phase 230V 50Hz	Three-phase 230 / 400V 50Hz	Three-phase 230 / 400V 50Hz
Measure type	Direct connection	Direct connection	Remote with CT
Maximum current per phase	100A	100A	According CT
Measure accuracy according IEC62053-21	1%	1%	1%
Meter consumption	<2W / 10VA	<2W / 10VA	<2W / 10VA
Protection class	II	II	II

## Environmental conditions and dimensions

Meter model	Mk7C	Mk10A-WC	Mk10A-CT
Weight	1.3kg	2kg	2kg
Dimensions (L*W*H)	210*134*70	240*166*74	240*166*74
Protection level	IP53	IP54	IP54
Operating temperature (Recommended)	-25°C / +60°C	-25°C / +60°C	-25°C / +60°C

## Interfaces

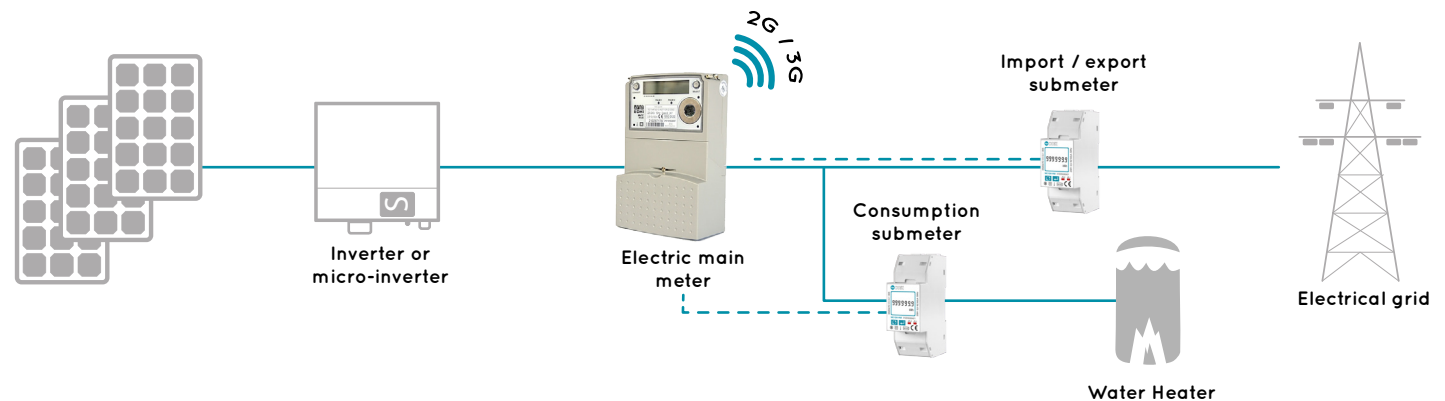
Meter model	Mk7C	Mk10A-WC	Mk10A-CT
Import / export submeter	1	1	1
Consumption submeter	1	1	1
Outputs (external display)	PV Production : 1 imp/Wh	PV Production : 1 imp/Wh	PV Production : 1 imp/Wh
Buttons & Screen	2 buttons + 1 screen	2 buttons + 1 screen	2 buttons + 1 screen
Cloud communication	2G/3G Modem	2G/3G Modem	2G/3G Modem

## Regulations

Safety standards	IEC 62052-11, IEC 6205-21, IEC 62052-31, IEC 62053-21, IEC 62053-23, EN 50470-1, EN 50470-3
Warranty	5 years (10 in option)

# INSTALLATION CIRCUIT PLAN

## SINGLE-PHASE / THREE-PHASE



- - - Pulse communication  
maximum distance: 20m without shielding, 50m with shielding

